

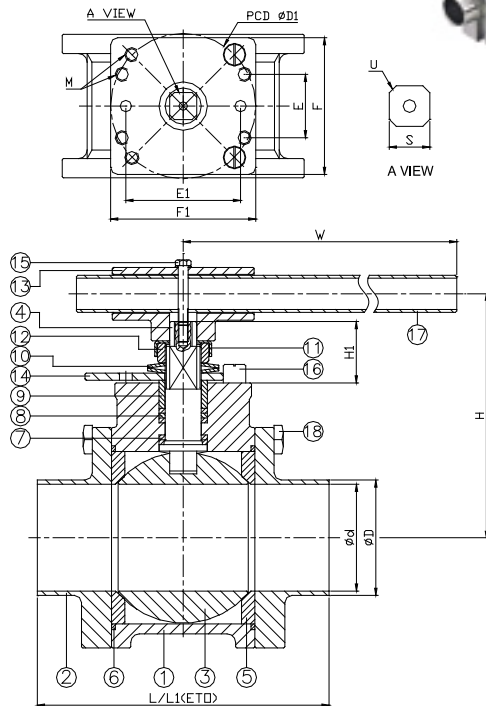
## FEATURES



- Tube end, 2-1/2"~4" (DN65~DN100)
- Body W.P. : 1000 WOG (PN63)
- Tube End W.P. : 200 WOG
- W.T. : -20°C~200°C (-4°F~392°F)
- Investment casting
- Blow-out proof stem
- Live-loading design
- Anti-static device (option)
- Cavity filled seats (option)
- Locking device
- ISO 5211 Mounting pad

### 2013KB-BPE

- Tube end castings have low sulphur content of 0.005-0.017%
- Extended tube end (ETO)



ITEM	PARTS	MATERIAL
1	BODY	ASTM A351-CF3M
2	CAP	
3	BALL	
4	STEM	ASTM A276-316L
5	SEAT	PTFE / TFM 1600
6	SEAL	PTFE
7	THRUST WASHER	
8	PACKING	AISI 304
9	GLAND RING	
10	BELLEVILLE WASHER	AISI 301
11	LOCKING WASHER	AISI 304
12	STEM NUT	ASTM A194-8
13	WRENCH BLOCK	AISI 304
14	STOPPER	
15	BOLT	ASTM A193-B8
16	STOP PIN	AISI 304
17	HANDLE	ASTM A167-304
18	BOLT	ASTM A193-B8

DN	d	D	L	L1	H	H1	W	S	D1	E	E1	F	F1	M	U	ISO 5211	Torque (N·M)
65	60.2	63.5	159	185	132.1	40.6	222	14	102	32	64	70.1	85.1	M10	M20*2.5	F10	28.2
80	72.9	76.2	177.8	220	165.6	42.7	349	19.1	102	44.5	80.5	96	102.1	M10	1"-14UNEF	F10	49.7
100	97.3	101.6	215.9	250	179.1	42.9	349	19.1	102	44.5	81	96	102.1	M10	1"-14UNEF	F10	99.4

unit:mm

NPS	d	D	L	L1	H	H1	W	S	D1	E	E1	F	F1	M	U	ISO 5211	Torque (in·lb)
2-1/2"	2.37	2.5	6.26	7.28	5.2	1.6	8.74	0.55	4.02	1.26	2.52	2.76	3.35	M10	M20*2.5	F10	250
3"	2.87	3	7	8.66	6.52	1.68	13.74	0.75	4.02	1.75	3.17	3.78	4.02	M10	1"-14UNEF	F10	440
4"	3.83	4	8.5	9.84	7.05	1.69	13.74	0.75	4.02	1.75	3.17	3.78	4.02	M10	1"-14UNEF	F10	880

unit:in